

Case Study

Telecommunications provider

Customer Telecommunications provider

Location London

Requirements

A leading telecommunications provider in London wanted to create a modern, collaborative workspace for its teams in a new, prestigious headquarters. As a world-leader in telecommunications, it was important that the network infrastructure was future-proofed and would be able to support growth and changing connectivity requirements.

Equipment

Excel category 6A F/FTP B2ca cable and RJ45-RJ45 pre-terminated link cables
Excel 24 port keystone angled and V patch panels with Excel cat 6A angled and low profile keystone jacks
Excel cat 6A F/FTP LSOH blade and mini patch leads
Excel Enbeam OM4 and OS2 fibre cable, patch leads and pigtails
Excel ExpressNet Panels and OM4 and OS2 ExpressNet modules
Excel CL 42U 800w x 1000w 2 compartment co-location rack
Excel Environ WR 9U and 18U wall boxes
Excel PDUs
Excel installation accessories

excel
without compromise.

Choosing the right partner

BW: Workplace Experts, in partnership with DACC Europe, delivered a comprehensive IT package, leveraging Excel Networking's cutting-edge products from start to finish.

The BW: Workplace Experts PM said:

"The client chose the BW and DACC Europe team for many reasons... A track record of successfully delivering projects together. High attention to detail. Consistently good working relationships, from the on-site team through to senior leadership team with clear and honest communications."

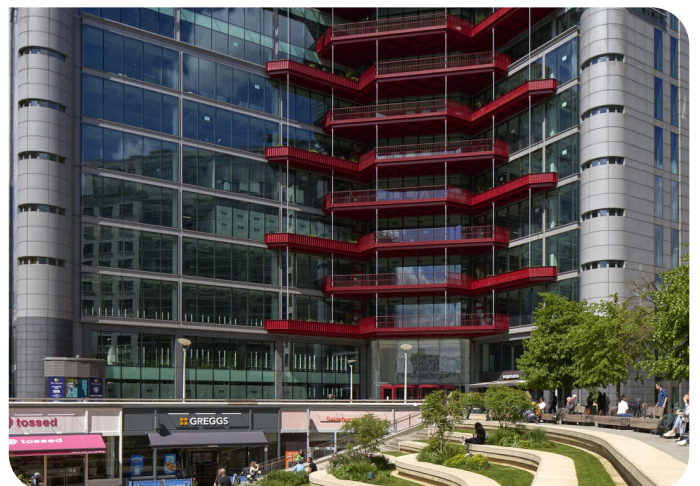
"Both companies are approved by the leading IT consultant, MiX Consultancy and we set the highest benchmark for standards and quality of work that other installers struggle to meet. We have early interaction with the client's IT team, including workshops and training. Plus our interactive patching schedule is unique to the industry."

Excel Networking and Mayflex were chosen for several reasons, including the quality and reliability of products, technical excellence, environmental commitment and comprehensive post-sale support.

He explained,

"Excel has a well-earned reputation for quality and reliability, and by choosing the UK market leader we can be confident that we will be supported at every stage of the installation and beyond. Excel exceeds all technical standards set by the ISO, CENELEC and TIA and is fully CPR compliant and that, together with the 25-year warranty, makes Excel the perfect choice to give the client peace of mind for many years to come."

"Helping to protect the environment is also a key factor, and Excel was the first, and still the only manufacturer, to eliminate single use plastic across the entire range of products - from patch leads, shutters and jacks, through to patch panels and bulk cable."



Products used

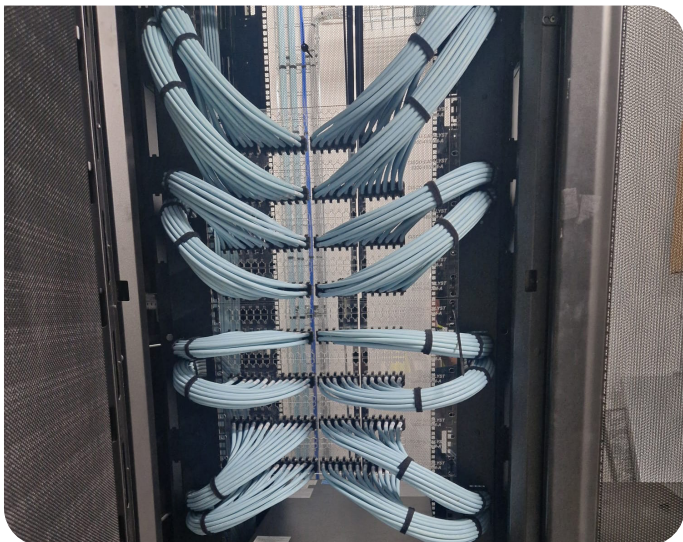
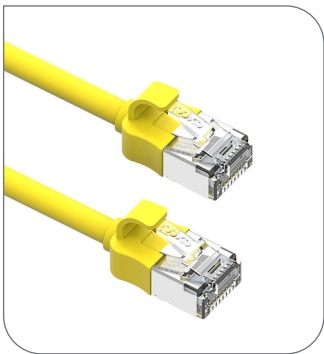
The Excel Cat6A copper solution was used to create the physical network infrastructure with Excel Enbeam OM4 fibre connectivity. Excel Enbeam OS2 CST armored, G652D compliant, low water peak grade fibre was also installed in the back bone. A combination of APC Netshester racks and Environ Wall Boxes has been used to house and manage the solution.

The solution also includes elements from the range of Aura AV (Audio Visual) equipment utilizing F type connectors for satellite and TV connectivity.

Cat6a F/FTP Harness links were also deployed within the solution.

The Excel Cat6a system delivers Class Ea performance, independently certified to meet and exceed ISO, CENELEC and TIA standards. This enables support of applications including 10GBASE-T, 10 Gigabit Ethernet.

The OM4 fibre deployed allows for excellent migration to higher network speeds, with ethernet application of 100GBASE-SR10 (100 Gigabit) at distances of 150m being achievable. The OS2 fibre allows for the ultimate in future proofing, with applications such as 100GBASE-ER4 at distances of 40Km.



The installation

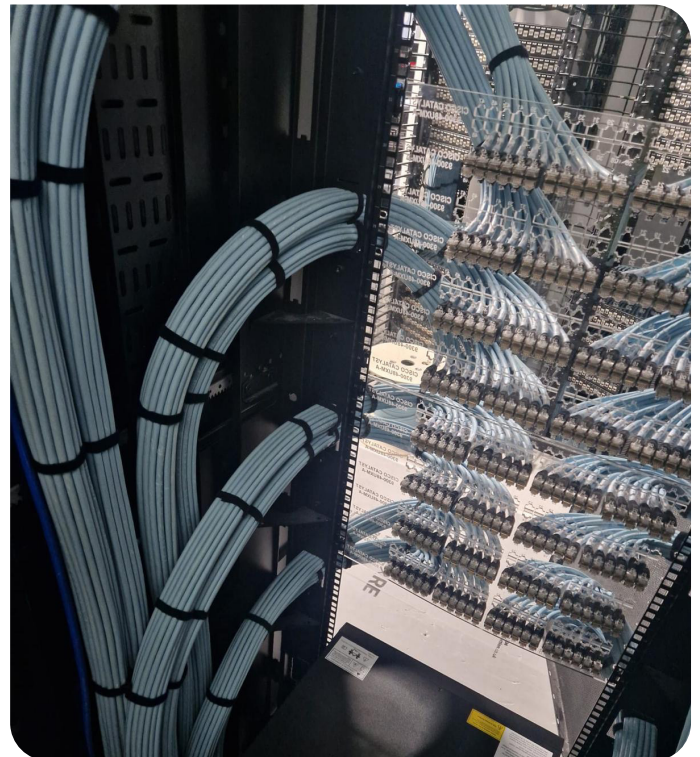
As a smart building, this facility relies on a complex network to support various systems including computers, AV equipment, security cameras, access control, Wi-Fi, telephones and other IT equipment. Additionally, numerous sensors and control units manage the building's environment.

A reliable network infrastructure now plays a critical role in ensuring occupant health and well-being, so a premium solution like Excel Networking was essential. Its long-lasting performance and industry-leading 25-year warranty provide peace of mind.

To safeguard the network from interference from other services, a shielded Cat6A solution was implemented. Excel Networking's compact and eco-friendly keystone jacks simplified installation, and arrive to site in plastic-free, fully recyclable boxes to minimise environmental impact.

Patching frames connected to the equipment racks with harness links were used to help protect the network hardware from potential damage. A combination of angled V and flat panels optimised space in both patching frames and equipment racks, and helped keep the patching frames, clear, neat, and tidy for an organised installation.

Excel Networking's Cat6A mini patch leads reduced cable density, making cable management more efficient. Floor and high-level outlets, deployed through GOP and floor boxes, offered flexibility for future reconfigurations.



The result

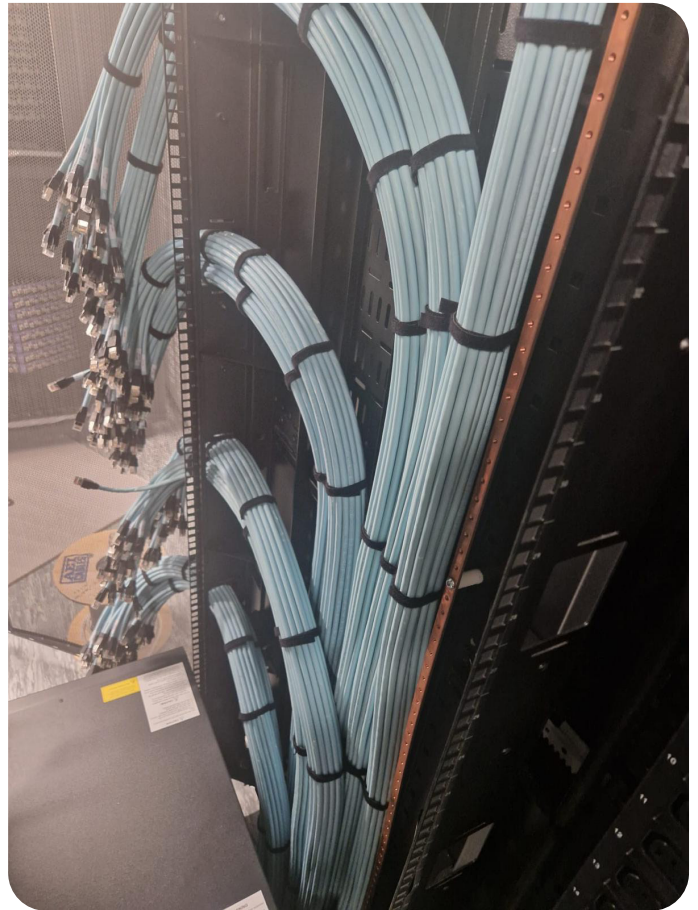
The telecommunications provider now has a new headquarters in London which is modern and matches the prestigious reputation of the client's brand. Delivered in just six months, the network installation is high quality, reliable and robust that can accommodate future growth and evolving connectivity needs.

The DACC PM said:

"Excel and Mayflex supported us at every stage on this project, from the initial tender stage through to practical completion. The quotes were clear and accurate, and documentation needed for technical submission was clear and easy to find. Indeed, Excel is one of the easiest structured cabling products to install and test, plus the warranty application process is simple with an industry leading turnaround. Back that up with high quality products, great stock availability and on time delivery and I don't know why anyone would choose an alternative system!"

Speaking after the installation, the end client agreed:

"As a world leader in Telecommunications, this new London HQ provides future-proof spaces for our colleagues to work and collaborate while meeting the evolving needs of the business. With the latest technology and connectivity being integrated into the office, it made perfect sense to install a state-of-the-art Cat6a copper and OM4/OS2 fibre network infrastructure from the UK's leading structured cabling manufacturer - Excel Networking."



Excel House
Junction Six Industrial Park
Electric Avenue
Birmingham B6 7JJ
England

T: +44 (0) 121 326 7557
F: +44 (0) 121 327 1537
E: sales@excel-networking.com

www.excel-networking.com

Mayflex MEA DMCC
Office 22A/B
AU (Gold) Tower
Cluster I
Jumeirah Lake Towers (JLT)
Dubai
United Arab Emirates
PO Box 293695

T: +971 4 421 4352
F: +971 4 421 5814
E: mesales@mayflex.com

excel
without compromise.